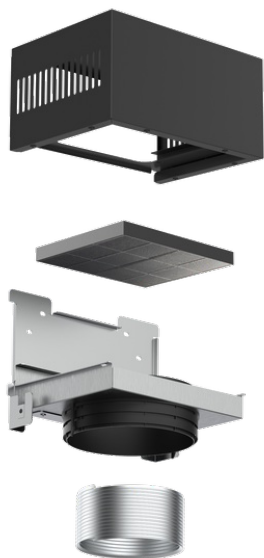


CG1 15200 L3C

Conventional recirculation kit without tube cover

**REFERENCE**

REF: 113290032

EAN: 8434778024814

FEATURES

Kit for the operation of the hood in recirculation mode

A removable stainless steel box is displayed at the end of the chimney for the replacement of overused filters

Infinity G1 edition

Included:

- Corrugated tube
- C1RTK conventional filter

DIMENSIONS

Product height (mm): 126

Product width (mm): 330

Product depth (mm): 270

Product length (mm):

Net weight (Kg): 4

COLOURS

113290032

Stainless Steel