


TAPS & SHOWERS

A WIDE RANGE OF SOLUTIONS



A REAL HOME

Teka Group, a wide range of solutions in all divisions

Teka is an European industrial group founded in Germany in 1924. With over 90 years of experience, the Group is a company committed to the production and manufacture of home kitchen appliances, professional kitchen products, taps and faucets, bathroom products, vitrified and industrial containers.

Continuous investment has led the Group to become one of Europe's leading companies in its sector and the world's leading manufacturer in stainless steel beer kegs and industrial containers. With headquarters and a centralized logistics platform in Europe, Teka is present in more than 110 countries worldwide, offering a complete product range under different brands through its 3 divisions (Kitchen and Bath, Professional Kitchen and Container).



Teka, kitchen and bath division

The Kitchen & Bath Division is Teka Group's largest business unit. With 17 factories in Europe, America and Asia-Pacific, the division is the leading European manufacturer of stainless steel sinks and built-in kitchen appliances: ovens, hobs, hoods, etc. As a technology manufacturer offering fully integrated and diversified product ranges, Teka Group provides integrated kitchen and bathroom solutions.

Professional kitchen division

The Professional Kitchen Division designs, manufactures, markets and services a broad line of standard modular and tailor-made kitchen and catering equipment for hotel chains, restaurants, educational centers, hospitals, airports and sports clubs, among others.

Its high quality technology and European design have earned it prestigious recognition within Europe.

Products are manufactured to customer specifications, but can be grouped into 5 main categories:

- Modular cooking units
- Convection and steam ovens
- Server and catering equipment
- Stainless steel furniture and Mobile kitchens



Container division

This division is specialized in the manufacturing of high-quality stainless steel containers. One out of three beer kegs in the world is produced by Teka, which makes us the global leader in this sector with an approximate 35% market share. Among the container division's clients are the world's most important breweries, in addition to chemical, pharmaceutical and food-service companies.

The Container Division produces and markets containers ranging from 5-liter pressure vessels with a maximum capacity of 3,000 liters to 10,000 liters storage tanks. Other products manufactured are; container systems for storage, transportation, blending and packaging of bulk solids or appliances with high-grade alloy components.





» Teka, our values are our strengths

As a solid and reliable brand, Teka has achieved an outstanding prestige among customers worldwide. A perfect choice backed up by the following key points:

Experience

Over 90 years of experience, becoming a renowned brand with strong values such as the Teka direct warranty, an effective after sales service and our European design.

Broad offer

The Group provides a full range of products such as sinks (stainless steel, granite, and synthetic), kitchen appliances, bathroom solutions, tailor-made containers, faucets and taps or stainless steel sanitary systems.

Quality

An extraordinary quality backed up by a large number of certifications such as the ISO and international awards. Sample testing and random inspections are carried out on deliveries to assure complete product and process quality. This search of perfection has led us to receive recognition, for example the 9 international awards we won in 2013-2014.

Solutions

The Group is a comprehensive supplier of comprehensive solutions and covers broad segments to attend to any customer's needs. We have a global reach with a local presence, always with stainless steel as our core business.

Innovation

A business development philosophy and a guarantee of total client satisfaction. The Hydroclean® oven-cleaning system and the revolutionary lhood® are clear examples of the result of our constant innovation and training programs.

Teka, more than 90 years producing taps



The Teka Group has also factories which are specialists in the production of bathroom products. Our core business includes taps, shower systems and stainless steel sanitaryware and accessories. Located in Spain, Hungary, China and Norway, these factories satisfy the needs of our partners in over 50 countries. Our experience of over 90 years has earned the trust of installers and plumbers all over the world.

Our goal of offering complete solutions for bathroom to our partners has motivated us to acquire or build new factories in Europe and Asia.

As part of the Teka Group, a market leader in kitchen solutions, we have been able to develop one of the world's most comprehensive ranges of kitchen taps.

Teka Also In Your Bathroom

- Spain
- Austria
- Hungary
- Germany



TEKA SANITARY SYSTEMS S.A.

Teka Sanitary Systems S.A., is the headquarters of the bathroom activities of the Teka Group. It is responsible for R&D and new technologies, as well as for the design center and main Quality Control laboratory. The company coordinates the two main logistic centers for bathroom products and kitchen taps. Its production facilities focus on mid and high end products.



TEKA MAGYARORSZÁG

Market leader in Hungary it is also one the main European manufacturers of ball valves for water and gas. It has been historically consolidating its position in very complex markets as the Russian Market, Germany and The Netherlands. Located in one of the main roads of central Europe, very near to Vienna, it is also the logistic platform of the Teka group for the countries of the area.



KAIPING TEKA FAUCETS

Designed to improve the position of Teka Sanitary Systems in the Asian markets and in Dollar influence areas, this production plant has implemented a certified management system according to ISO 9001.

In addition, it is recognized as productive center of Teka Sanitary Systems by the certification entities of AENOR (Spain) and AFNOR or CSTB (France).

The company also has it's own R&D department.

Teka, complete manufacturing process



1 CASTING DEPARTMENT

High precision foundry machines that use CB755S high quality Brass.



2 MACHINING DEPARTMENT

The best way to grant a perfect machining quality is to make all the operations in a single process, this is only possible using modern CNC transfer machines.



3 GRINDING AND POLISHING DEPARTMENT

Robotics used to fully automate the demanding grinding process, assuring consistent quality.

Automated polishing of the grinded parts to provide a high polish finishing before applying the chrome coating.



4 GALVANIC PLANT

Fully automated chrome plating plant equipped with the highest environment protecting technologies.

High quality chrome coating with a high resistance to corrosion and scratches that grants a durable shine (12,5 Ni-Cr thickness)



5 SPECIAL FINISHES WORKSHOP

High resistance lacquers and other new generation finishes like fotoluminiscent paints and nanotechnology.



6 QUALITY CONTROL, ASSEMBLY AND PACKAGING

Product components assembly as well as function and watertightness tests of 100% of the products. Product and components careful disposal in its protective packing.

R+D+i+

IDEAS+CREATIVITY+FRESHNESS+EVO-
LUTION+HANDINESS+FUN+IDEAS+IDEAS
+IDEAS+IDEAS+IDEAS+IDEAS+IDEAS...
AND +IDEAS



Whilst pondering on the name we were to give the innovations jointly developed by our R&D&I team and contract designers for this new catalogue, some questions arose: what name to give this blend of new dreams and ideas for bathrooms and kitchens? Was it possible to bring together so much innovation and new design under one single name? And that's how we came up with COOL LAB®

A laboratory of fresh, practical, fun and original ideas. It gathers under one roof designs of our own Teka In-House Design Department, contributions from international designers and important architecture studios, new tap finishes such as Black&White by Teka, fun glow-in-the-dark taps thanks to the new Moonlite® finish, the force of the new Titanium Chrome® development and the state-of-the art minimalism of the Aura series.

This is our ever-expanding and developing laboratory of ideas.

This is the continually evolving open forum for new creations.

This is how trends are born: from good ideas...by TEKA COOL LAB®

Finishes that glow in the dark

PHOTOLUMINESCENT PAINT



WHAT IS IT?

Photoluminescence is a property of this new finish, where a light energy charged material radiates light in the dark for a given period of time.

HOW LONG DOES THIS LUMINESCENT EFFECT LAST?

Specifically in terms of this original innovation developed by our R&D team and depending on a few factors, up to 12 hours of light can be emitted.

HOW IS THIS DONE?

We apply this photoluminescent finish on an up to 40 micra thick colour undercoat.

HOW LONG DOES THIS SPECIAL FINISH LAST?

If cleaned with plain soap and water avoiding chemical products, the photoluminescent properties will remain unchanging.

Quality Certifications

Many are the tests that a product has to fulfill before being certified: dimensional characteristics, water pressure resistance, minimum water flows, noise levels, durability of the materials, mechanisms... etc. ISO 9001 certifications shows our compromise with quality in all those

phases of the designing process and production of our taps. Most of our products are in hold of the certifications obtained in very demanding markets such as France (NF), Norway (SINTEF) and Spain (AENOR).



SPAIN

ACS

Attestation
conformité sanitaire

FRANCE



FRANCE



THAILAND



SINGAPORE



NORWAY

Multibox concealed system



Multifunctionality:

a concealed unit which is suitable for shower systems, bath/shower mixers or even both.

Security:

Thanks to this concealed solution we can avoid burning caused by contact with the hot body when using hot water.

Easy to use:

all controls in a single panel (temperature and flow regulators, diverter...)

Easy to clean:

Less surface that needs to be cleaned and easier to access.

Space saving solution:

by using a concealed system you will have bigger space in your shower.

One single concealed body for several models:

make your installation and after decide what model you will place in it.

General features of our products



New generation of teka cartridges

- **Highly precise temperature control.** Highly sensitive and reliable temperature regulation
- **Greater handling sensitivity.** Gentle cartridge activation (Max. 0.30 Nm)
- **Maximum product life reliability.** Exceeds 350,000 cycles in standardised endurance trials. Exceeds the top level by 42%
- **Complies with the most demanding regulations:** EN-817; NF-077; NF-D 18.202; ASME 1 112.18.1
- **Noise.** In accordance with European regulation EN-817
- **Ecological.** Temperature and flow caps
- **Supports over 50 bars of pressure.** The standard pressure in a Spanish home is of 3 bars. Exceeds 200 water hammers of 50 bars, thus doubling the most demanding regulatory requirements.
- **Top quality materials.** Suppliers holding the following sanitary certifications: ACS; NSF; KTW; WRAS
- **Guaranteed dual quality control.** 100% of the cartridges are tested twice, during manufacture and at the end of tap production.
- **5 years guarantee**
- **Design 100% Teka**
- **Continuous improvement in the development of the production process,** equipped with laboratory devices to perform the tests required by the regulations, including an acoustic test chamber.

* Not all taps have temperature and flow regulators in the cartridge.



Sintered ceramic discs

All Teka cartridges use sintered ceramic discs of high resistance. These discs all have porous surfaces which retain the grease longer helping to achieve smoother, gentler movements and therefore prolonging the life of the taps. The operating gear is insulated from water giving therefore continuous lubrication.

Duration of mechanisms

| | Teka Norm | European Norm |
|------------|------------------|----------------|
| Headparts | + 500.000 cycles | 200.000 cycles |
| Cartridges | + 175.000 cycles | 70.000 cycles |
| Spouts | + 200.000 cycles | 80.000 cycles |
| Diverter | + 80.000 cycles | 30.000 cycles |

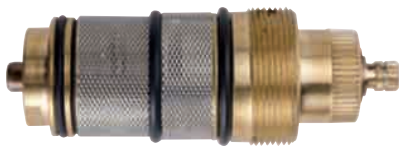
General features of our products

Teka ceramic headparts



Ceramic headparts of 1/2 turn, which provide an easy and smooth water mixture also reducing the consequences of water hammer.

Thermostatic technology



Our thermostatic mixers fulfill the requirements of sensibility, stability and safety demanded by the European Norm EN 1111. Functioning has been improved with elements such as check valves protected by filters. The anti scalding function of the temperature limiter button at 38°C is reinforced by the design of the mixer, that makes hot water

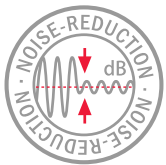


circulate through the rear part of the thermostatic mixer avoiding any involuntary contact with the warmest zone.

The flow regulator is equipped with an ecologic flow limiter which helps to save water and energy. To increase the desired flow quantity you just have to press the green button.

Other features of our taps

Noise reducers



The bath/shower and shower mixers incorporate noise reducers which substantially limit the noise made by water circulating through the tap.

High quality stainless steel flexible inlet pipes

High quality (3/8" or 1/2") stainless steel flexible inlet pipes with watertight o-rings. They fulfill the requirements of the most demanding Quality Control Authorities in many European countries.

Quick and easy installation

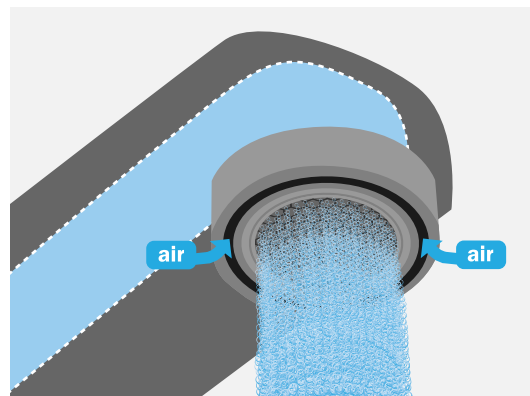


Quick and easy fitting system (a simple 12 mm box spanner is enough in most cases)

Dynamic stream aerator



- Special anti-scale
- Vandal-proof aerator
- Splash-free water stream
- Noise reduction





| | |
|---------------------------------|-------------|
| Bathroom Taps Collection | P.12 |
| Teka SPA Shower Systems | P.16 |
| Shower Arms | P.18 |
| Bathroom Accessories | P.19 - P.21 |
| Hand Showers | P.22 |
| Head Showers | P.23 |
| Shower Accessories | P.24 |
| Cold Tap Series | P.25 - P.31 |

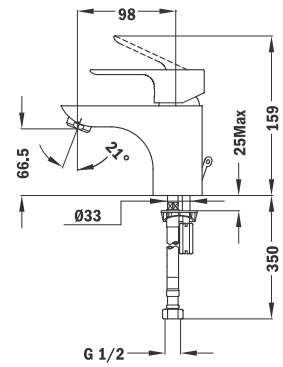
CALVIA



- Washbasin Mixer**
- With pop up waste
 - 1/2" flexible inlet pipes

Code
32.342.02.10

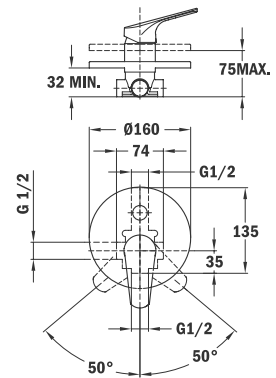
RRP
RM420



- Concealed Bath & Shower Mixer**
- Without shower set
 - Concealed part included
 - 40 mm cartridge

Code
32.171.02.00

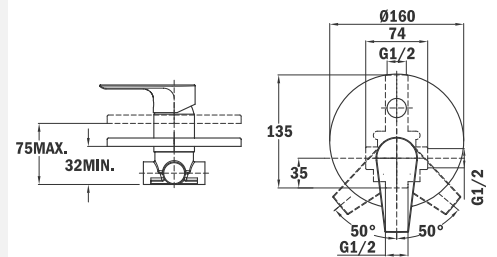
RRP
RM540



- Concealed Shower Mixer**
- Without shower set
 - Concealed part included
 - 40 mm cartridge

Code
32.241.02.00

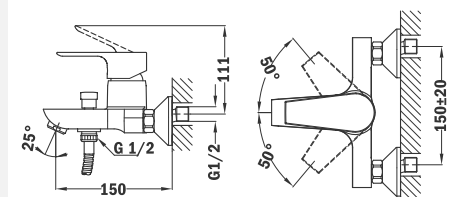
RRP
RM390



- Exposed Bath & Shower Mixer**
- Equipped with noise reducers
 - Anti-scale

Code
32.121.02.00

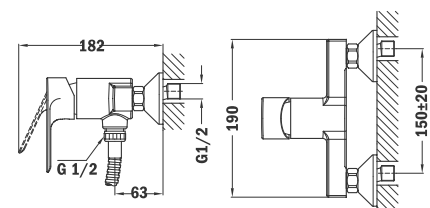
RRP
RM430



- Exposed Shower Mixer**
- Equipped with noise reducers

Code
32.231.02.00

RRP
RM370



INCA



Washbasin Mixer

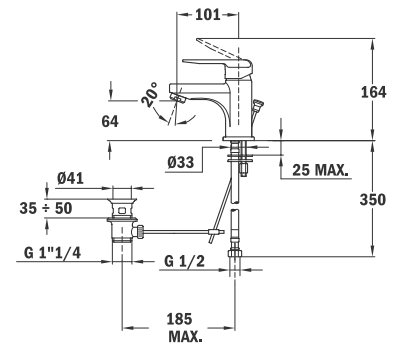
- Automatic metal pop-up waste
- 1/2" flexible inlet pipes
- Anti-scale areator

Code

53.3412.12

RRP

RM350



Concealed Bath & Shower Mixer

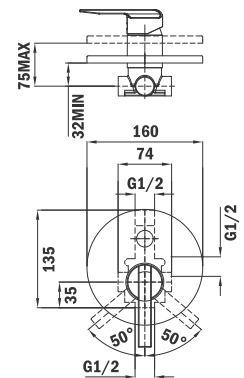
- Without shower set
- Concealed part included 40 mm cartridge

Code

53.171.12

RRP

RM520



Concealed Shower Mixer

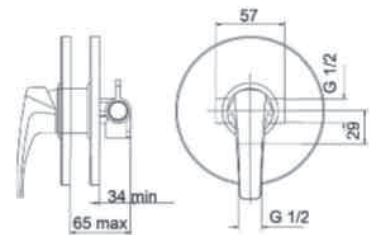
- Without shower set
- Concealed part included 40 mm cartridge

Code

53.241.12

RRP

RM370



Exposed Bath & Shower Mixer

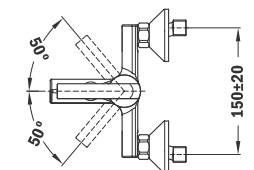
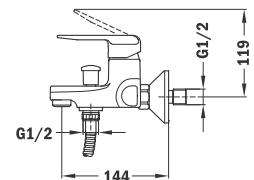
- Equipped with noise reducers

Code

53.101.12

RRP

RM420



Exposed Shower Mixer

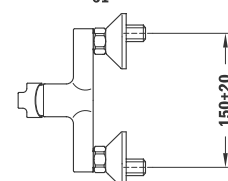
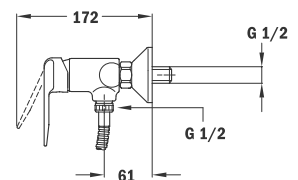
- Equipped with noise reducers

Code

53.231.12

RRP

RM340



ALAIOR XL



Washbasin Mixer

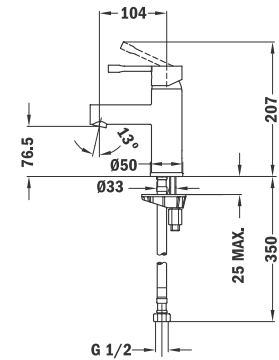
- With pop up waste
- 1/2" flexible inlet pipes
- Anti-scale aerator

Code

22.342.02.10

RRP

RM480



Exposed Bath & Shower Mixer

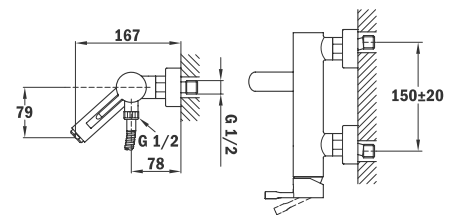
- Equipped with noise reducers
- Anti-scale aerator
- Diverter integrated in the mixer

Code

22.121.02.00

RRP

RM650



Exposed Shower Mixer

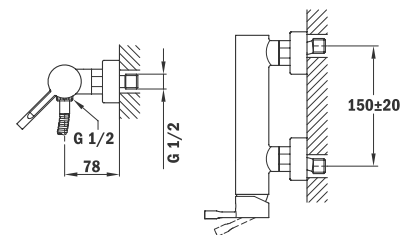
- Equipped with noise reducers

Code

22.231.02.00

RRP

RM490



AURA



Washbasin Mixer

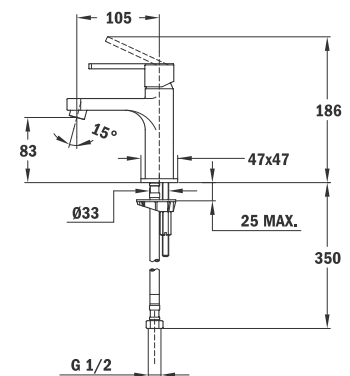
- With pop up waste
- 1/2" flexible inlet pipes
- Anti-scale aerator
- 25mm cartridge

Code

50.342.02.10

RRP

RM460



Exposed Bath & Shower Mixer

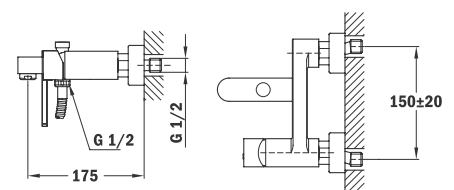
- Equipped with noise reducers
- Anti-scale aerator

Code

50.121.02.00

RRP

RM530



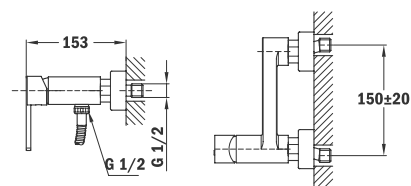
AURA



Exposed Shower Mixer
• Equipped with noise reducers

Code
50.231.02.00

RRP
RM470



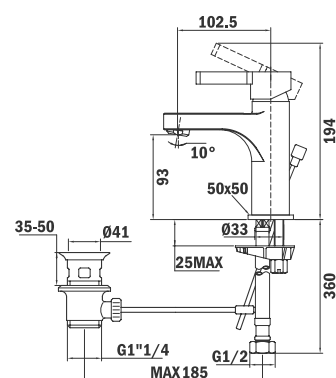
PALMA



Washbasin Mixer
• With pop-up waste
• 1/2" flexible inlet pipes
• 8 lts/min water saving anti-scale aerator

Code
65.342.PP.50

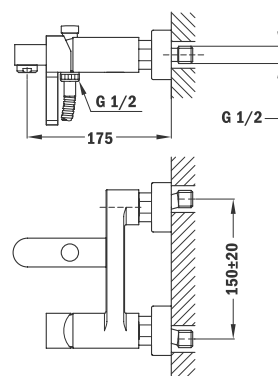
RRP
RM490



Exposed Bath & Shower Mixer
• Without shower set
• Equipped with noise reducers
• Anti-scale aerator

Code
65.121.PP.00

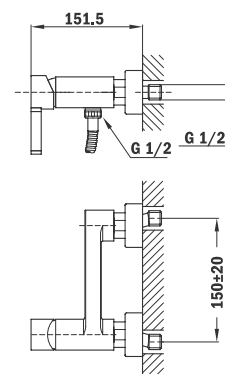
RRP
RM560



Exposed Shower Mixer
• Without shower set
• Equipped with noise reducers

Code
65.231.PP.00

RRP
RM470



SPA 1



Ø 250 mm

250 Ultra Slim Shower Head

- Stainless Steel AISI 304
- Anti scale
- Ultra slim
- 250mm
- Extra flow

Code
79.006.66.00

RRP
RM340



Ø 300 mm

300 Ultra Slim Shower Head

- Stainless Steel AISI 304
- Anti scale
- Ultra slim
- 300mm
- Extra flow

Code
79.006.67.00

RRP
RM440



Ø 400 mm

400 Ultra Slim Shower Head

- Stainless Steel AISI 304
- Anti scale
- Ultra slim
- 400mm
- Extra flow

Code
79.006.68.00

RRP
RM730

SPA 2



250 X 250 mm

250 Ultra Slim Shower Head

- Stainless Steel AISI 304
- Anti scale
- Ultra slim
- 250mm
- Extra flow

Code
79.006.69.00

RRP
RM410



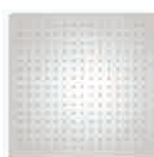
300 X 300 mm

300 Ultra Slim Shower Head

- Stainless Steel AISI 304
- Anti scale
- Ultra slim
- 300mm
- Extra flow

Code
79.006.70.00

RRP
RM480



400 X 400 mm

400 Ultra Slim Shower Head

- Stainless Steel AISI 304
- Anti scale
- Ultra slim
- 400mm
- Extra flow

Code
79.006.71.00

RRP
RM820

UNIVERSE PRO



Telescopic rail

Shower System

- Universal installation system on any non concealed bath shower and shower mixer
- Adjustable telescopic rail for easier installation:
 - Min. height: 800mm
 - Max. height: 1300mm
- Minimum recommended pressure: 1,5 bar
- Ceramic diverter
- Ice L shower head 250 mm
- Ice Hand shower 3 functions
- Adjustable hand shower holder
- Reinforced metal flexible hose 150 cm
- Connecting metal flexible hose (80 cm) between mixer and shower system

Attention: mixer not included

Code

79.002.72.00

RRP

RM740

UNIVERSE CUADRO PRO



Telescopic rail

Shower System

- Universal installation system on any non concealed bath shower and shower mixer
- Adjustable telescopic rail for easier installation:
 - Min. height: 990 mm
 - Max. height: 1.180 mm
- Minimum recommended pressure: 1,5 bar
- Ceramic diverter
- Anti-scale shower head 240 x 360 mm
- Anti-scale hand shower
- Adjustable hand shower holder
- Connecting metal flexible hose (80 cm) between mixer and shower system
- Reinforced metal flexible hose 150 cm

Attention: mixer not included

Code

79.002.74.00

RRP

RM950

FORMENTERA 300



Brass Shower Arm

- 300 mm
- 25 x 25 mm
- Thread 1/2"

Code
79.007.55.00

RRP
RM270

FORMENTERA 400



Brass Shower Arm

- 400 mm
- 25 x 25 mm
- Thread 1/2"

Code
79.007.56.00

RRP
RM300

ALAIOR 300



Brass Shower Arm

- 300 mm
- Ø 22mm
- Thread 1/2"

Code
79.007.57.00

RRP
RM250

ALAIOR 400



Brass Shower Arm

- 400 mm
- Ø 22mm
- Thread 1/2"

Code
79.007.58.00

RRP
RM270

FORMENTERA V



Vertical Brass Shower Arm

- 200 mm
- Thread 1/2"

Code
79.007.59.00

RRP
RM140

ALAIOR V



Vertical Brass Shower Arm

- 200 mm
- Thread 1/2"

Code
79.007.60.00

RRP
RM130

BD-155



ABS Shower Arm

- 150 mm

Code
79.007.61.00

RRP
RM70

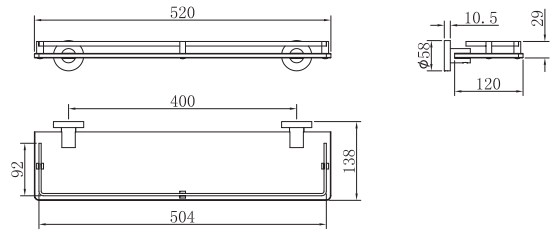
ALAIOR



Glass Shelf

Code
17.074.02.00

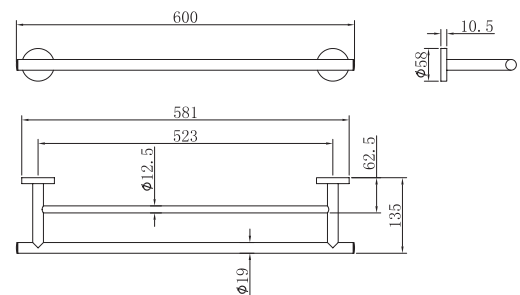
RRP
RM310



Double Towel Bar

Code
17.062.02.00

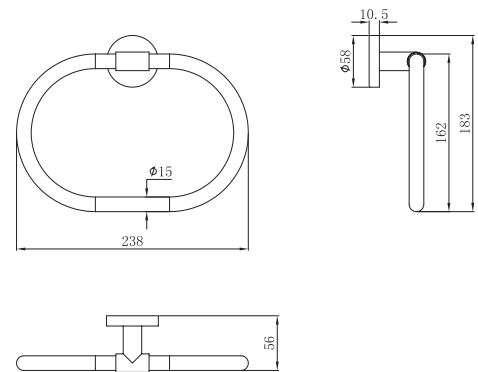
RRP
RM370



Towel Ring

Code
17.063.02.00

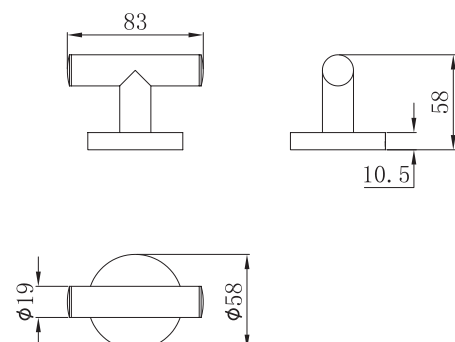
RRP
RM200



Double Robe Hook

Code
17.065.02.00

RRP
RM110



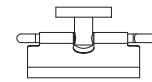
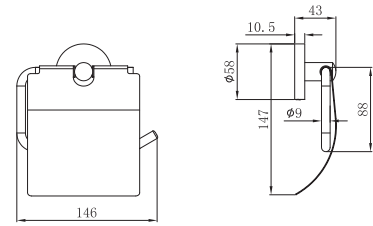
ALAIOR



Paper Holder With Lid

Code
17.072.02.00

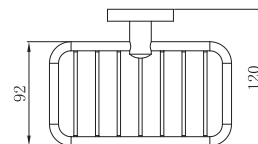
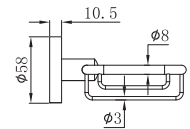
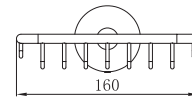
RRP
RM200



Soap Dish

Code
17.064.02.00

RRP
RM230



FORMENTERA

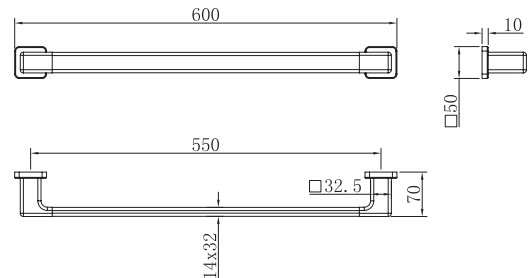


Towel Bar

- Polished Chrome finish
- High quality materials
- Brass+ Zink construction
- Fixing set + allen wrench included
- Match up perfectly with Formentera range and square design
- Hard Wearing

Code
17.076.02.00

RRP
RM290

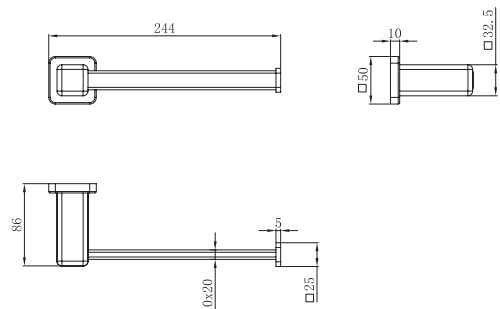


Hand Towel Holder

- Polished Chrome finish
- High quality materials
- Brass+ Zink construction
- Fixing set + allen wrench included
- Durable

Code
17.079.02.00

RRP
RM240



FORMENTERA

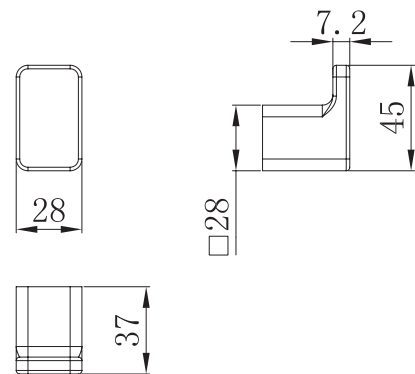


Robe Hook

- Polished Chrome finish
- High quality materials
- Brass+ Zink construction
- Fixing set + allen wrench included
- Durable

Code
17.080.02.00

RRP
RM50

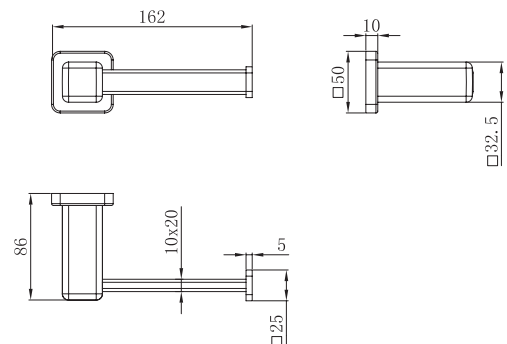


Paper Holder

- Polished Chrome finish
- High quality materials
- Brass+ Zink construction
- Fixing set + allen wrench included
- Hard wearing
- Solid lines

Code
17.083.02.00

RRP
RM137

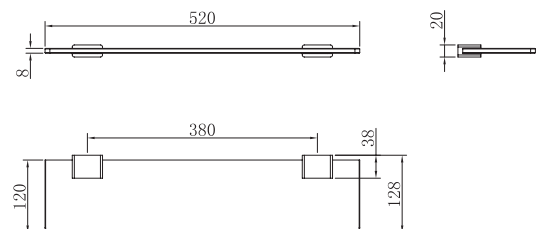


Glass Shelf

- Polished Chrome finish
- High quality materials
- Brass+ Zink construction
- Fixing set + allen wrench included
- Match up perfectly with Formentera range and square design
- Glass tempered

Code
17.084.02.00

RRP
RM110

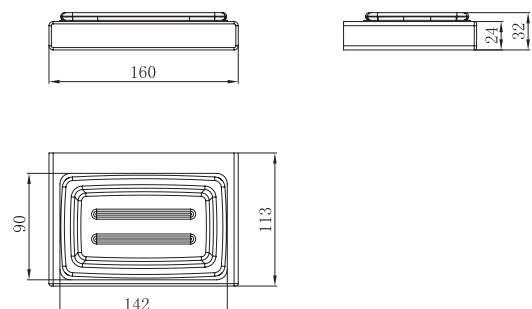


Soap Dish

- Polished Chrome finish
- High quality materials
- Brass+ Zink construction
- Fixing set + allen wrench included
- Match up perfectly with Formentera range and square design
- Beautiful blend with chrome and white

Code
17.082.02.00

RRP
RM150





Hand Showers

ICE




Hand Shower

- 3 functions:
 - Rain
 - Massage
 - Soft
- Anti-scale

Code
79.003.70.00

RRP
RM130

STYLE SPORT



Hand Shower

- 3 functions:
 - Rain
 - Massage
 - Soft
- Anti-scale

Code
79.003.65.00

RRP
RM90

CUADRO DUO



Hand Shower

- 1 function
- Anti-scale
- Color combination: Chrome + Black

Code
79.003.68.00

RRP
RM80

FORMENTERA



Sliding Bar

- Oriental Sliding bar
- 71.8 cm
- Adjustable shower holder.

Code
79.001.63.00

RRP
RM220

DISK 1



ABS Shower Head
• 1 function: Rain

Code
79.006.77.00

RRP
RM120

DISK 2



Shower Head
• Ø 200 mm
• Anti-scale
• Swivel ball-joint

Code
79.006.64.00

RRP
RM270

CUADRO DUO



Shower Head
• 210 x 300 mm
• Anti-scale system
• Colour: Black + Chrome
• Swivel ball-joint

Code
79.006.62.00

RRP
RM350



OCEAN



ABS Shower Head- Single Mode
• 1 function:
- Rain
• Ø 65 mm.
• Anti-scale
• Swivel ball-joint

Code
79.006.51

RRP
RM80

ICE



Shower Head
• Fully chromed
• L Size ø 250
• Anti-scale
• Swivel ball-joint

Code
79.006.63.00

RRP
RM320

METAL FLEXIBLE SHOWER HOSE



- Length: 1.5m

Code
79.009.53

RRP
RM50

BRASS WATER OUTLET



- Brass
- 1/2" water outlet connection
- Adjustable

Code
79.010.50

RRP
RM100

STYLO



- Shower Holder**
- Ø 45 mm
 - Adjustable

Code
79.004.51

RRP
RM40

FORMENTERA



- Shower Holder**
- Adjustable

Code
79.004.54.00

RRP
RM40

BIDET



- Shower-Bidet Hand Spray**
- Hand shower with stop function
 - Reinforced metal flexible shower hose with brass connections 1,20 m
 - Shower holder for hand shower

Code
79.005.50

RRP
RM110

BIDET II



- Hand Spray (Complete Set)**
- Hand spray
 - Reinforced metal flexible shower hose with brass connections 1.5 m
 - Shower holder for hand shower

Code
79.005.55.00

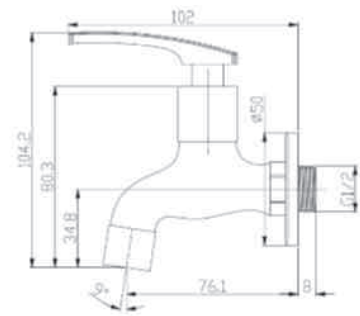
RRP
RM100



Bib Tap

Code
16.121.02.00

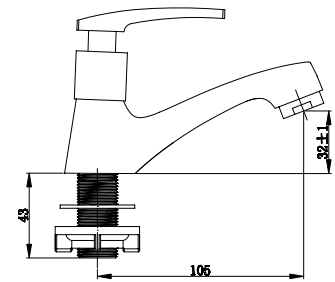
RRP
RM100



Pillar Tap

Code
16.124.02.00

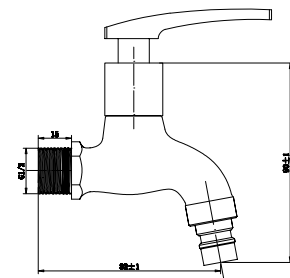
RRP
RM140



Hose Bib Tap

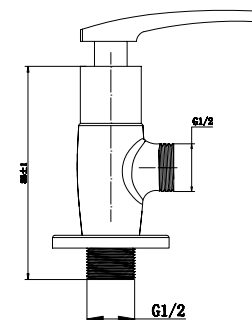
Code
16.122.02.00

RRP
RM100

Right Angle
Stop Valve

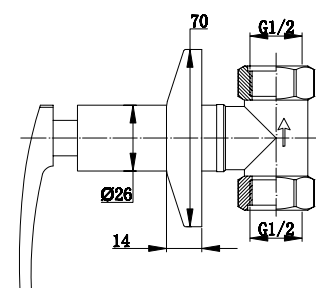
Code
16.123.02.00

RRP
RM70

1/2"
Stop Valve

Code
14.054.02.00

RRP
RM110



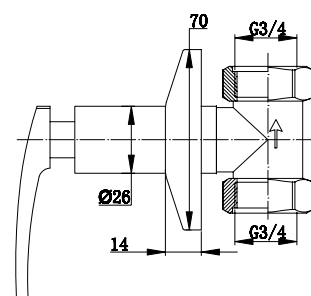
EBRO



3/4"
Stop Valve

Code
14.055.02.00

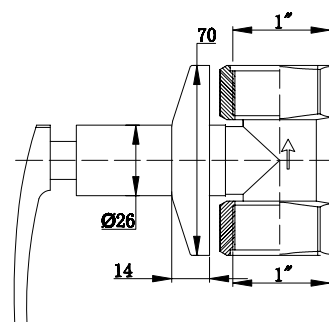
RRP
RM120



1"
Stop Valve

Code
14.056.02.00

RRP
RM130



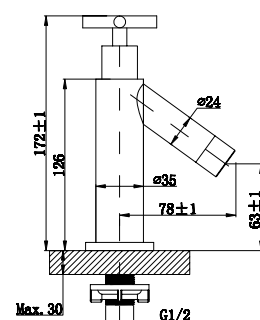
GALAXY



Pillar Tap

Code
16.125.02.00

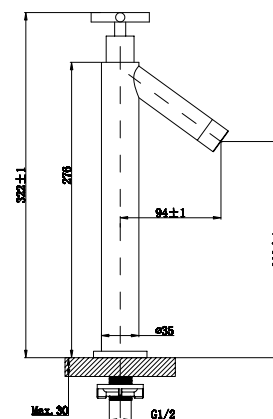
RRP
RM220



**Pillar Tap
(Tall)**

Code
16.126.02.00

RRP
RM350





Cold Tap Series

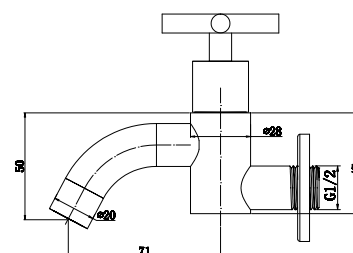
GALAXY



Bib Tap

Code
16.129.02.00

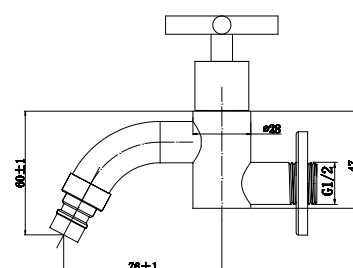
RRP
RM130



Hose Bib Tap

Code
16.130.02.00

RRP
RM140



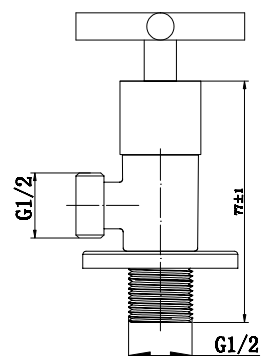
GALAXY



**Right Angle
Stop Valve**

Code
16.131.02.00

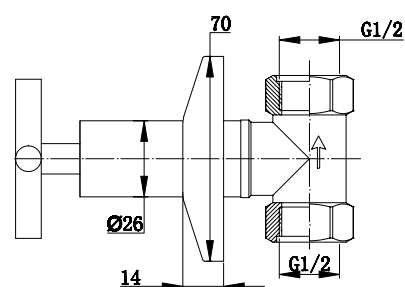
RRP
RM90



**1/2"
Stop Valve**

Code
14.057.02.00

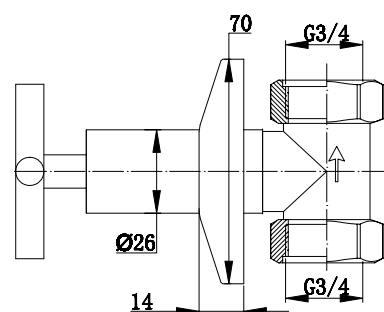
RRP
RM130



**3/4"
Stop Valve**

Code
14.058.02.00

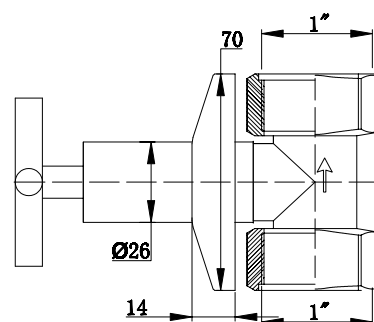
RRP
RM140



**1"
Stop Valve**

Code
14.059.02.00

RRP
RM150





Cold Tap Series

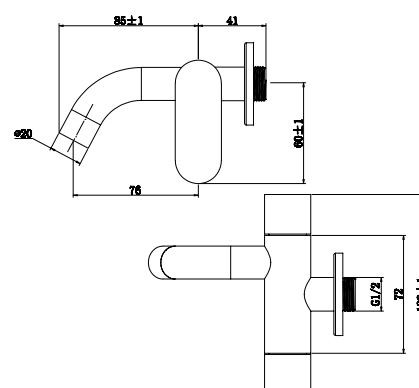
TAGUS



2 Way Bib Tap

Code
16.132.02.00

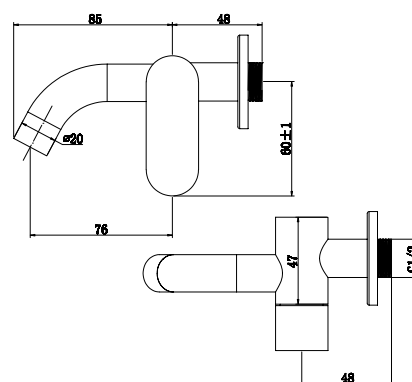
RRP
RM180



Bib Tap

Code
16.133.02.00

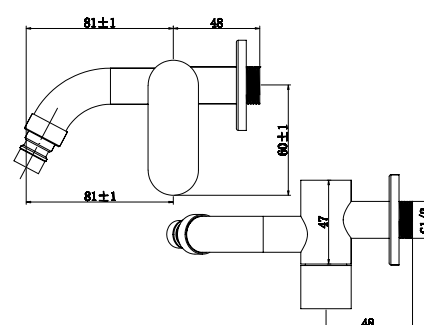
RRP
RM120



Hose Bib Tap

Code
16.134.02.00

RRP
RM120



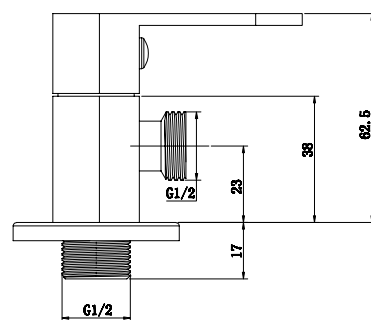
TAGUS



**Right Angle
Stop Valve**

Code
16.135.02.00

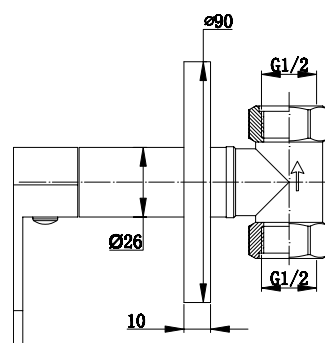
RRP
RM90



**1/2"
Stop Valve**

Code
14.060.02.00

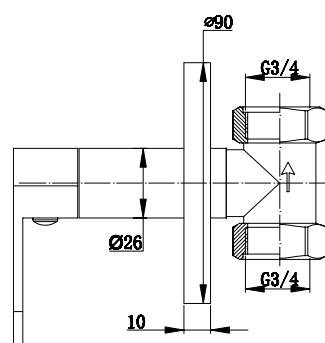
RRP
RM140



**3/4"
Stop Valve**

Code
14.061.02.00

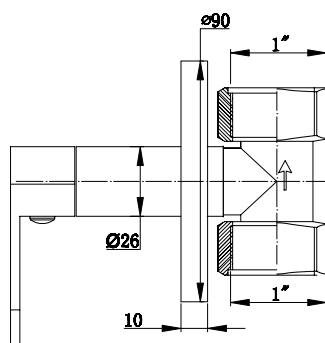
RRP
RM150



**1"
Stop Valve**

Code
14.062.02.00

RRP
RM160



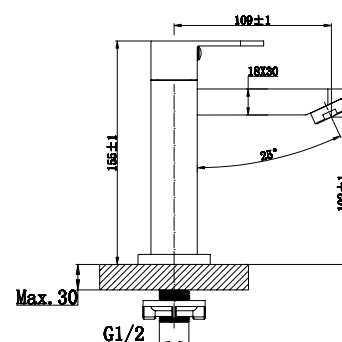
TAGUS



Pillar Tap

Code
16.138.02.00

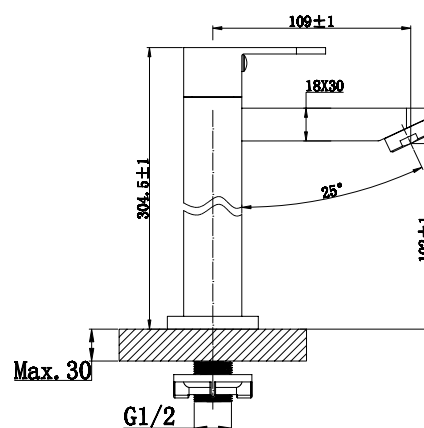
RRP
RM260



Pillar Tap
(Tall)

Code
16.139.02.00

RRP
RM360



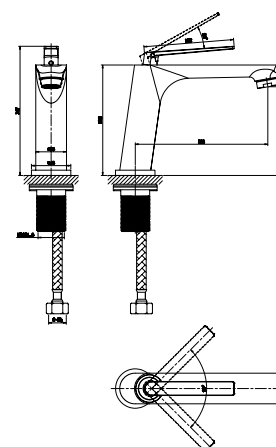
ARTEMIS



Pillar Tap

Code
16.13401.02.00

RRP
RM240



WARRANTY

Our products come with a ONE-YEAR warranty for the Shower Collection & Bathroom Accessories and FIVE-YEAR warranty for Bath Mixers (excluding Cartridge which bears ONE-YEAR warranty) and Bathroom Accessories. We offer One to One Replacement for manufacturer's defects subject to terms and conditions.

*Kitchen & Bathroom Mixer cartridge bears with ONE-YEAR warranty.





A REAL HOME

Teka Kuchentechnik (Malaysia) Sdn. Bhd. (441253A)

No.10, Jalan Kartunis U1/47, Temasya Industrial Park, 40150 Shah Alam, Selangor, Malaysia.

Tel: +603 7620 1600 Fax: +603 7620 1626



teka.com.my



[tekamalaysia](https://www.facebook.com/tekamalaysia)